



St Paul's Way

Aspiration • Integrity • Community

PART OF UNIVERSITY SCHOOLS TRUST

Year 9 Pathways

2024

A Guide for Students and Parents



St Paul's Way Trust School is part of the University Schools Trust (UST). UST is a charitable company limited by guarantee registered in England and Wales.
Company No: 7742547 Registered office: UST House, Limehouse Causeway, London, England, E14 8AQ



St Paul's Way

Aspiration • Integrity • Community

PART OF UNIVERSITY SCHOOLS TRUST

Contents

Introduction	1
Message from Ms Uddin, Head of School	2
Making Choices.....	3
GCSE English Language (AQA)	7
GCSE English Literature (AQA)	8
GCSE Mathematics (Edexcel)	10
GCSE Triple Science (AQA)	12
GCSE Religious Studies (AQA)	13
GCSE Sports Courses (Edexcel).....	14
GCSE Geography (Edexcel).....	16
GCSE History (Edexcel).....	17
GCSE French (AQA)	18
GCSE Latin (OCR)	20
GCSE Music (Edexcel)	24
GCSE Drama (Eduqas).....	25
GCSE Business (Edexcel).....	27
GCSE Computer Science (OCR)	28
GCSE Design and Technology (Eduqas).....	31
GCSE Photography (Edexcel).....	35
Participation	39
Key Dates.....	40
Year 9 Pathways Form.....	41



Introduction

Dear Year 9 Students, Parents and Carers,

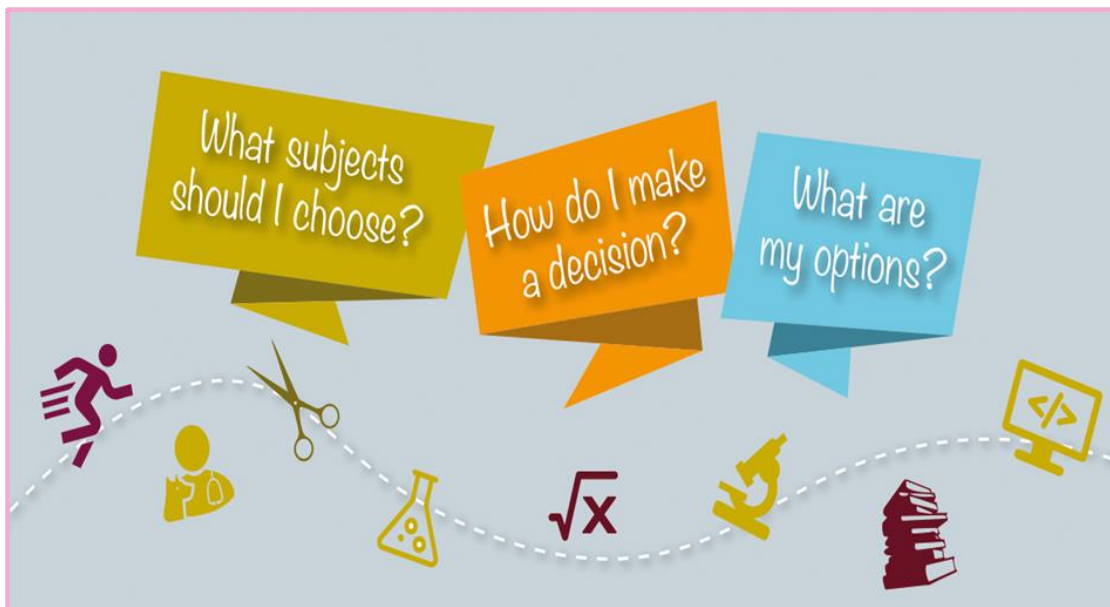
This booklet is designed to help you and your family make decisions about the next stage of your education. Please do take time to read through this booklet with your parents or carer.

To choose the right pathway you will not only need to think about the GCSE courses that you would like to follow, but also start to consider what you would like to do after Year 11, A-Levels, BTECs, apprenticeships, college, university, career.

It may seem there is much to take in at this stage, but there are many people at St Paul's Way School to advise and guide you. The main points of contact are; Ms Newlyn, Year Team Leader for Year 9, Mr Ali, Student Achievement Coordinator, Ms El Ouaraini, Careers Education and Guidance Manager and Mrs Cooke, Senior Pastoral Lead.

The Year 9 Pathways Event is the first opportunity for you and your families to learn about the options process for our Year 9 students. Since November, students will have received information during assemblies and tutor time to help them reach a decision on which pathway is suited to their abilities and career aspirations.

Ms Newlyn
Year 9 Team Leader





St Paul's Way

Aspiration • Integrity • Community

PART OF UNIVERSITY SCHOOLS TRUST

Message from Ms Uddin, Head of School

Dear SPW Year 9s,

You have reached an exciting time in your education. At this stage you will now have more choice in the subjects you will be studying over the next two years and therefore building on the career path in which you are interested. This is probably one of the first instances where you hold such responsibility for yourselves. This is an exciting prospect, if possibly a little daunting, however remember that the highly experienced SPW staff will be supporting you at every step. Life presents many challenges but together we can learn and grow stronger from these experiences, rather than letting them diminish our resolve and enthusiasm.

Consider the selection of your subjects carefully, that your individual subjects and the combination of subjects are appropriate to your interests and talents and that they are relevant to your further study Post -16 and at university or in the apprenticeship route / future career to which you aspire.

This booklet will provide the information you will need in considering your options. I wish you all the best for this significant time in your life.

Remember.....

"You are braver than you believe, stronger than you seem and smarter than you think."

A.A Milne

Ms Uddin
Head of School

Making Choices

Choosing Your Pathway

CORE CURRICULUM

All students follow the core curriculum which includes Maths, Science and English. This is designed so you can acquire the skills and qualifications that you will need for the future, whatever you decide to do. You will have started your RE GCSE course in Year 9 and will take the exam at the end of Year 10. You will also have 2 periods of PE every fortnight – to keep you healthy in body as well as mind.

FURTHER OPTIONS

You will also have an element of choice involved when choosing your options. During Year 7 to Year 9, you will have followed the school's curriculum and have had the opportunity to explore the various subjects the school has to offer. This now means that, for the first time you can shape aspects of your own learning in Key Stage 4, according to your interests, future education and career aspirations.

Core Subjects	Languages	Humanities	Business & Computer studies	Creative Arts & Technology	Physical Education
Maths English Language English Literature Science (Combined or Triple) PE (Non-Exam)	French Spanish Latin	History Geography	iMedia Computer Science Business Studies	Art Photography Textiles Food & Nutrition Design & Technology Drama Music	BTEC Sport GCSE PE



Further Guidance

How can I develop my skills through different subjects?

English	Mathematics	Science	Art/ Design Technology	Music	IT
Analytical Speaking Listening Communication Creativity	Problem-Solving Critical Thinking	Research Teamwork Communication	Creativity Problem-Solving Critical Thinking Hand-Eye Coordination	Creativity Culture Critical Thinking	Technician Numeracy Analytical Organisation Problem-Solving

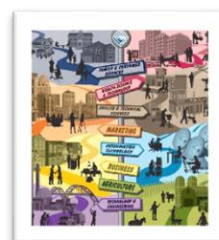
PE	Drama	Business	Languages	History	Geography
Leadership Teamwork Decision-making	Communication Teamwork Creative	Communication Independence/ Teamwork Analytical Writing	Interpersonal Skills Communication Attention to Detail	Research Independence Empathy	Teamwork Problem-Solving Data Collection

Pathways

Points to consider in creating your pathway:

- What do you want to do *after your GCSEs*? If you are planning to take A-levels and then go to university, following one of the EBacc pathways is your best choice. It keeps all your options open and develops the skills that you will need for further academic study
- Select subjects that you *enjoy* studying - you are going to be spending a lot of time on them over the next 2 years!
- Focus on subjects at which you are *good* - you want the best grades that you can achieve
- Do NOT be swayed by what your friends are doing - now is the time to *start being a strong and independent individual*. This is your life, and you need to shape it in *the best way for you*. What might be a good pathway for your friend, might not necessarily be for you! Everyone is different.

There are 3 main pathways between which you can choose:



1. English Baccalaureate (EBacc) Pathway:

This pathway is recommended for the majority of students. It provides a balanced curriculum that will leave your options open for A-levels, university and careers. You will do Combined Science and receive 2 GCSEs and you will then need to choose one humanities subject (either Geography or History) and one language (French, Latin or Spanish). You can then choose any third subject.

Core subjects	English Language GCSE English Literature GCSE Mathematics GCSE Combined Science GCSE (Two GCSEs) RE GCSE (completed in Year 10)
Humanities	Geography or History GCSE
Languages	French, Latin or Spanish GCSE
Options Subjects	iMedia, Computer Science GCSE, Business Studies GCSE, Art GCSE, Photography GCSE, Textiles GCSE, Food & Nutrition GCSE,



	Design & Technology GCSE, Drama GCSE, Music GCSE, Sport BTEC, PE GCSE
Total Number of GCSEs	9 GCSEs or equivalent qualifications

2. Faraday EBacc Pathway:

This is for students who have a particular interest and ability in science. You will be studying Triple Science and receive 3 separate GCSEs in Biology, Chemistry and Physics. You will then need to choose one humanities subject (either Geography or History) and one language (French, Latin or Spanish).

Please note to follow this pathway you should speak to your science teacher to see if you are a suitable candidate.

Core subjects	English Language GCSE English Literature GCSE Mathematics GCSE Biology GCSE Chemistry GCSE Physics GCSE RE GCSE (completed in Year 10)
Humanities	Geography or History GCSE
Languages	French, Latin or Spanish GCSE
Total Number of GCSEs	9 GCSEs or equivalent qualifications

3. Blended Pathway:

This pathway is a bespoke pathway for students who will study a combination of subjects outside of the EBacc or Faraday pathway. Please speak with the year team and the AEN department if you would like support with your options choices for this pathway.

Core subjects	English Language GCSE English Literature GCSE Mathematics GCSE Combined Science GCSE (Two GCSEs) RE GCSE (completed in Year 10)
Options Subjects	iMedia, Computer Science GCSE, Business Studies GCSE, Art GCSE, Photography GCSE, Textiles GCSE, Food & Nutrition GCSE, Design & Technology GCSE, Drama GCSE, Music GCSE, Sport



St Paul's Way

Aspiration • Integrity • Community

PART OF UNIVERSITY SCHOOLS TRUST



GCSE Mathematics (Edexcel)

Maths is one of the core subjects all students must study and, along with GCSE English Language, it is one of your most important subjects. This course will teach you a wide range of mathematical skills and knowledge:

- To acquire and use problem-solving strategies
- To select and apply mathematical techniques and methods in mathematical, every day and real-world situations
- To reason mathematically, make deductions and inferences and draw conclusions
- To interpret and communicate mathematical information in a variety of forms appropriate to the information and context.

The new maths curriculum grades pupils using a 1-9 scale. Most sixth forms and colleges require you to have at least a grade 6 in Mathematics to continue studying it at A-level. This will lead to many career options, either way, it is vital that you are confident in using numbers and in applying your numeracy skills in everyday situations.

COURSE OUTLINE

The content of the GCSE Maths course is divided into six strands. Topic areas covered are:

- Number
- Algebra
- Geometry & Measures
- Statistics & Probability
- Ratio, Proportions and Rates of Change.

Functional skills are also taught and you will have opportunities to explore mathematical activities in a range of real-life contexts.

Mathematics GCSE qualification has two tiers: Higher and Foundation.

EXAM STRUCTURE

Your progress throughout Year 10 and Year 11 will be used to determine the tier for which you should be entered.

For both tiers, students will sit 3 exam papers:

- Paper 1 (Non-Calculator) **33.3%** (1 hour 30 minutes)
- Paper 2 (Calculator) **33.3%** (1 hour 30 minutes)
- Paper 3 (Calculator) **33.3%** (1 hour 30 minutes)



GCSE Combined Science - Trilogy (AQA)

Science is a core component of the KS4 curriculum. You will learn about the world around you gaining scientific knowledge, understanding and skills. You will develop a critical approach to scientific evidence and methods, exploring a range of scientific ideas and their implications for society. The skills, knowledge and understanding that you will acquire throughout this course will help you to appreciate how science works and its essential role in the wider world. Most students will study **GCSE Combined Science: Trilogy** will count as 2 GCSEs.

COURSE OUTLINE

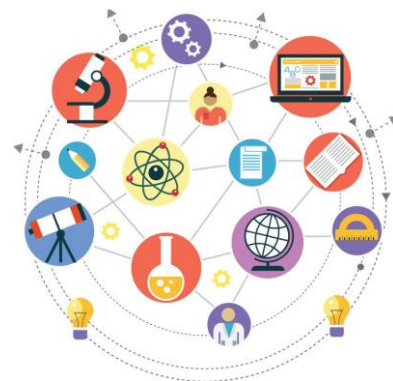
Combined Science Course Content		
Biology	Chemistry	Physics
<ol style="list-style-type: none">1. Cells2. Organisation3. Infection and response4. Bioenergetics5. Homeostasis6. Inheritance, Variation and Evolution7. Ecology	<ol style="list-style-type: none">1. Atoms, Bonding and Moles2. Chemical Reactions and Energy Changes3. Rates, Equilibrium and Organic Chemistry4. Analysis and the Earth's Resources	<ol style="list-style-type: none">1. Energy and Energy Resources2. Electricity3. Particles at Work4. Forces in Action5. Waves, electromagnetism

EXAM STRUCTURE

GCSE Combined Science: Trilogy

- Biology Paper 1 and Paper 2 (1 hour 15 minutes each)
- Chemistry Paper 1 and Paper 2 (1 hour 15 minutes each)
- Physics Paper 1 and Paper 2 (1 hour 15 minutes each).

Each exam has an equal weighting, and the course has 2 tiers - higher and foundation.

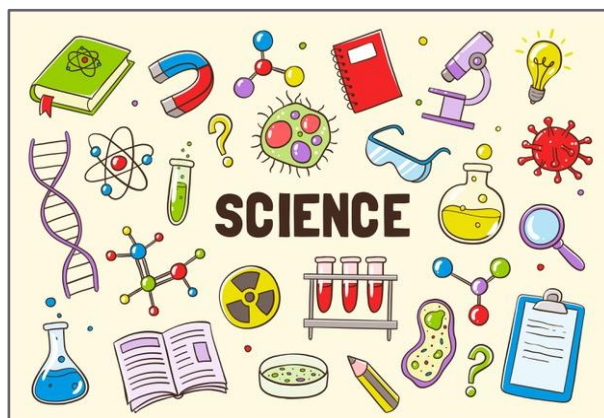


GCSE Triple Science (AQA)

If you are particularly interested in science and have achieved a high level in your KS3 assessments, you may wish to consider studying triple science where you will gain 3 separate GCSEs in Biology, Chemistry and Physics. You will study the same topics as the ones in the trilogy course, however, you will be covering more sub-topics and content.

You must be recommended by your science teacher to choose this option and show additional commitment to the subject.

Choosing triple science is useful if you are considering focusing on sciences at A-level, but it is also possible to study A levels in any of the sciences after studying GCSE Combined Science: Trilogy.



COURSE OUTLINE

Triple Science Course Content		
Biology	Chemistry	Physics
1. Cells 2. Organisation 3. Infection and Response 4. Bioenergetics 5. Homeostasis 6. Inheritance, Variation and Evolution 7. Ecology	1. Atoms, Bonding and Quantitative Chemistry 2. Chemical Reactions and Energy Changes 3. Rates, Equilibrium and Organic Chemistry 4. Analysis and the Earth's Resources	1. Energy and Energy Resources 2. Electricity 3. Particles at Work 4. Forces in Action 5. Waves, Electromagnetism and Space

EXAM STRUCTURE

GCSE Triple Science

- Biology Paper 1 and Paper 2 (1 hour 45 minutes each)
- Chemistry Paper 1 and Paper 2 (1 hour 45 minutes each)
- Physics Paper 1 and Paper 2 (1 hour 45 minutes each).



GCSE Religious Studies (AQA)

Students would have already begun their RE GCSE in Year 9 and complete this in Year 10. Our GCSE covers Islam and Christianity, four contemporary ethical themes, ensuring students have a diverse choice of intriguing subjects to explore.

Students will be challenged with questions about belief, values, meaning, purpose and truth, enabling them to develop their own attitudes towards religious issues.



Students will also gain an appreciation of how religion, philosophy and ethics form the basis of our culture. They will develop analytical and critical thinking skills, the ability to work with abstract ideas, leadership and research skills. All these skills will help prepare them for further study.

COURSE OUTLINE and EXAM STRUCTURE

Unit 1: The study of Religions (written exam - 50%)

- Christian beliefs and teachings
- Christian practices
- Islamic beliefs and teachings
- Islamic practices.

Unit 2: Thematic Studies (written exam - 50%)

- Relationships and families
- Religion and life
- Religion of crime and punishment
- Religion, peace and conflict.



GCSE Sports Courses (Edexcel)

GCSE PE & BTEC in Sport

If you enjoy PE and are interested in challenging yourself to study the subject at a more advanced level, then these are the courses for you! As you would expect, there is a strong practical element where you will have the opportunity to develop and be assessed on your sporting performance and fitness levels. There is also a significant theoretical component of a science nature where you will extend your knowledge and understanding of all aspects of the body related to physical activity and sport.

These include:

- Anatomy & Physiology: musculoskeletal system and cardio-respiratory system
- Participation in physical activity
- Technology in sport
- Components of Fitness
- Movement Analysis: forces, levers, axes
- Physical Training
- Fitness Testing
- Health and Wellbeing
- Sports Psychology
- Sports Leadership
- Socio-cultural aspects related to sport.



COURSE OUTLINE & ASSESSMENT STRUCTURE

	GCSE PE	BTEC Tech Award in Sport
Practical Performance	Assessed in 3 sports. 30% of overall grade	Assessed in 1 sport. (Part of coursework grade)
Written Exam	2 written exams 60% of overall grade	1 Written exam 40% of overall grade
Written Coursework	10% of overall grade	60% of overall grade

Academic Pathway: This course can lead onto a Level 3 BTEC in Sport (which is now running in the 6th form at SPW) or A level course in PE or Sports Science. This could then lead onto an apprenticeship or university and/or a career in the sports/fitness industry.



St Paul's Way

Aspiration • Integrity • Community

PART OF UNIVERSITY SCHOOLS TRUST



GCSE Geography (Edexcel)

This GCSE qualification will enable students to explore the world, the issues it faces and their own place in it, and to help prepare them to succeed in any future chosen pathway.

To be successful in this GCSE qualification, students need to have an interest in current world events, possess strong literacy skills coupled with a thirst for geographical facts and have developed analytical skills. This specification asks for students to write in detail whilst showing an understanding of key global and local case studies covering all topics.

COURSE OUTLINE

Unit 1: Global Geographical Issues

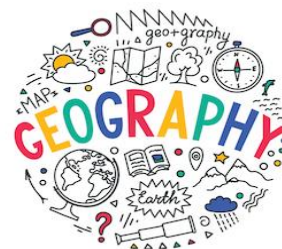
- Hazardous Earth
- Development Dynamics
- Challenges of an Urbanising World.

Unit 2: Making Geographical Issues

- The UK's evolving physical landscape (coastal change and conflict and river processes and pressures)
- The UK's evolving human landscape and geographical investigations (including one physical fieldwork - coasts - and one human fieldwork investigations - urban study).

Unit 3: Making Geographical Decisions

- People and the Biosphere
- Forests Under Threat
- Consuming Energy Resources



EXAM STRUCTURE

- Paper 1 - Global Geographical Issues (1 hour 30 minutes-37.5%)
- Paper 2 - UK Geographical Issues (1 hour 30 minutes - 37.5%)
- Paper 3 - Making Geographical Decisions (1 hour 30 minutes - 25%).

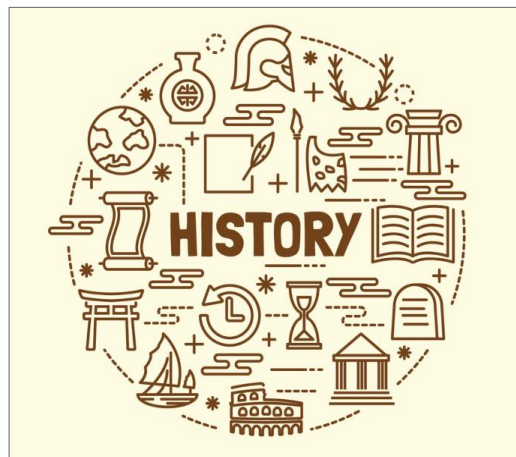
Academic Pathway: GCSE Geography is a facilitating subject and will look excellent to potential A level colleges, apprenticeships, and potential employees.



GCSE History (Edexcel)

In GCSE History, students will acquire the skills and knowledge to engage with and understand a fast-changing world. This GCSE qualification will engage students with a broad and diverse study of the history of Britain and the wider world and help to acquire skills that will support progression to further study of history as well as a wide range of other subjects.

To be successful in this GCSE qualification students need to have an interest in historical events, have strong literacy skills and have developed reading skills. This specification asks for students to write extensively and with analytical skill.



COURSE OUTLINE & EXAM STRUCTURE

Unit 1: Migrants in Britain, c800 to present and Notting Hill, c1948-70

Thematic study and historic environment
30% of the qualification.

Unit 2: Early Elizabethan England, 1558-88

British depth study
20% of the qualification.

Unit 3: Weimer and Nazi Germany, 1918-39

Modern depth study
30% of the qualification.

Unit 4: Superpower relations and the Cold War, 194-91

Period study
20% of the qualification.

Academic pathway: GCSE History is a facilitating subject and will look excellent to potential A level colleges, apprenticeships, and potential employees. The History qualification will show all potential pathways that successful candidates have strong analytical and academic skills.

GCSE French (AQA)

Modern Foreign Languages are increasingly important for today's young people. Being an integral part of the English Baccalaureate, a GCSE in French will equip you with a skill that can be utilised in countless careers. French is the ninth most spoken language with over 200 million speakers worldwide. Students with an additional language have a substantial range of opportunities open to them and will be well placed in completing for the best university courses.



The aim of our French department is to develop competence in oral and written communication, so that you become confident in dealing with a range of authentic listening and reading material and gain a sound working knowledge of basic grammatical structures. You will also learn a considerable amount about English through your study of French, as well as gaining an insight into the cultures of French-speaking countries.

Learning a language happens most effectively when regular exposure takes place, and our staff use French for much of the teaching.

COURSE OUTLINE

Students study all the following themes on which the assessments are based:

- Theme 1: Identity and culture
- Theme 2: Local, national, international and global areas of interest
- Theme 3: Current and future study and employment.

EXAM STRUCTURE

GCSE French has 2 tiers - Foundation (Maximum Grade 5) and Higher (Grades 4-9).

Paper 1: Listening (Written Exam 25%) **(F: 35 minutes, H: 45 minutes)**

Understanding and responding to different types of spoken language.

Paper 2: Speaking (25%) **(F: 7-9 minutes, H: 10-12 minutes)**

Communicating and interacting effectively in speech for a variety of purposes. Students will have to take part in a role-play, a photo card activity and a general conversation.

Paper 3: Reading (Written Exam 25%) **(F: 45 minutes, H: 1 hour)**

Understanding and responding to different types of written language, including a translation from the target language into English.

Paper 4: Writing (Written Exam 25%)

Communicating effectively in writing for a variety of purposes.



St Paul's Way

Aspiration • Integrity • Community

PART OF UNIVERSITY SCHOOLS TRUST

GCSE Latin (OCR)

To study the innovative and brutal society of ancient Rome is to understand the ideas and forces which have shaped the modern world. Delving back, therefore, into the roots of our social, cultural and linguistic inheritance allows us to, more deeply, understand ourselves while a knowledge of Latin enriches our own thoughts, ideas and the speech by which we express them. The course is one of the EBacc Language options, and one which is increasingly rare in which to be qualified.

Latin GCSE encourages students to:

- Develop insights into the relevance of ancient civilisation to our understanding of our modern world of diverse cultures
- Deploy their knowledge and understanding of Latin to deepen their understanding of English and other languages
- Develop research and analytical skills which will empower them to become independent learners and enquirers, equipping them for further study in arts, humanities and sciences.



COURSE OUTLINE

Unit 1: Latin Language (*written exam – 50%*)

In the course of this unit, learners will develop their knowledge of Latin vocabulary and linguistic structures through reading and studying texts and stories in Latin. They will then demonstrate their linguistic competence through the translation and comprehension of unseen Latin passages.

Unit 2: Latin Literature (*written exam – 25%*)

This unit develops learners' knowledge and understanding of ancient literature through studying the work of authors Pliny and Tacitus, on the subjects of Roman emperors, revenge, death and power. This component assesses learners' ability to analyse, evaluate and respond to the ancient literature they have studied.

Unit 3: Roman Civilisation (*written exam – 25%*)

This component develops learners' knowledge and understanding of Roman civilisation and culture through the study of ancient literature and archaeological artefacts. The topics studied are gods, religion and myths, and Roman Britain.

GCSE Spanish (AQA)

Modern Foreign Languages are increasingly important for today's young people. As an integral part of the English Baccalaureate, a GCSE in Spanish will equip you with a skill that can be utilised in countless careers. Spanish is the fourth most spoken language in the world with over 400 million speakers worldwide. Students with an additional language have an ample range of opportunities open to them and will be well placed in competing for the best university courses.



The aim of our Spanish department is to develop competence in oral and written communication, so that you become confident in dealing with a range of authentic listening and reading material and gain a sound working knowledge of basic grammatical structures. You will also learn a considerable amount about English through your study of Spanish, as well as gaining an insight into the cultures of Spanish speaking countries.

Learning a language happens most effectively where regular exposure takes place, and our staff use Spanish for much of the teaching.

COURSE OUTLINE

Students study all the following themes on which the assessments are based:

Theme 1: Identity and culture

Theme 2: Local, national, international and global areas of interest

Theme 3: Current and future study and employment.

Assessments

GCSE Spanish has a Foundation Tier (grades 1-5) and a Higher Tier (grades 4-9). Students must take all four question papers at the same tier.

Paper 1: Listening (25% of GCSE)

Understanding and responding to different types of spoken language.

Assessed through a written exam; 35 minutes (Foundation Tier) 45 minutes (Higher Tier).

Paper 2: Speaking (25% of GCSE)

Communicating and interacting effectively in speech for a variety of purposes. The format is the same for both Foundation and Higher Tier, but with different



stimulus. Students will have to take part in a role-play (15 marks), a photo card activity (15 marks) and a general conversation (30 marks).

Students will speak for 7-9 minutes (Foundation Tier) and 10 – 12 minutes (Higher Tier).

Paper 3: Reading (25% of GCSE)

Understanding and responding to different types of written language, including a translation from the target language into English.

Assessed through a written exam; 45 minutes (Foundation Tier), 60 minutes (Higher Tier).

Paper 4: Writing (25% of GCSE)

Communicating effectively in writing for a variety of purposes.

In Foundation Tier there are four questions: Question 1 – list task, Question 2 – message (60 words), Question 3 – translation from English into target language (35 words), and Question 4 – structured writing (90 words).

In the Higher tier there are three questions: Question 1 –structured writing (90 words), Question 2 – open-ended writing (150 words), Question 3 – translation from English into the target language (50 words).



St Paul's Way

Aspiration • Integrity • Community

PART OF UNIVERSITY SCHOOLS TRUST



GCSE Music (Edexcel)

GCSE Music is a challenging, well-respected, and highly enjoyable course through which you will develop a wide range of skills which you will find useful in your future academic studies and career. Through learning an instrument or singing you will show future employers/universities that you have the discipline and commitment it takes to perform music to a high standard. Composition will show that you have engaged your creative side and that you have developed your imagination whilst meeting a detailed brief. Lastly, music is an academic as well as a practical subject; the listening and appraising skills that you will develop will be invaluable to you. Students who opt for GCSE Music go on to pursue a range of careers, including music, medicine, law, music therapy, teaching, arts and artist management and film production.

COURSE OUTLINE & EXAM STRUCTURE

Unit 1: Performing (*practical exam – 30%*)

You will have the opportunity to have individual instrumental/vocal lessons throughout the course. You will be expected to take an active role in the musical life of the school and for the final exam you will perform 1 solo piece and 1 ensemble piece.

Unit 2: Composing (*coursework – 30%*)

Throughout the course, you will learn how to extend and shape your own musical ideas, developing a range of compositional techniques. For the final exam you need to submit 2 compositions in contrasting musical styles (relating to the areas of study listed for unit 3).

Unit 3: Listening & Appraising (*written exam – 40%*)

For this part of the course, you will explore 8 set works that cover 4 areas of study:

- Instrumental Music 1700-1820
- Vocal Music
- Music for Stage and Screen
- Fusions.





GCSE Drama (Eduqas)

Should you opt for drama you will have the opportunity to be creative and practical. Your communication skills will be developed, and this will enable you to become more articulate in your speech. You will also hone the skills needed to work cooperatively as part of a team. By the end of the course your confidence will have grown, and every successful doctor, lawyer and accountant needs confidence!

But it is not all about performing. There is a written component for the drama course, which is similar to GCSE English Literature, so be prepared to work with the same level of focus and commitment. For students less keen on acting, there is a design pathway option where you can explore sound, lighting, costume or set design, rather than acting. As a drama student you will have the opportunity to attend West End theatre productions, take part in performance workshops with professional theatre practitioners and present your work in our state-of-the art Willoughby Theatre.

COURSE OUTLINE

In drama your practical and written skills will be assessed.

Component One - Devising Theatre (*coursework - 40%*)

You will work with others to create an original piece of drama from scratch. You will then submit a portfolio of supporting evidence and a written evaluation of the process.

Component Two - Performing from a Text (*practical exam - 20%*)

This is a practical exam, and you will be assessed on your ability to stage and act or design scenes from an existing play text.

Component Three - Interpreting Theatre (*written exam - 40%*)

You will have a written examination which is based on a set play text and an analysis of a live theatre performance.





St Paul's Way

Aspiration • Integrity • Community

PART OF UNIVERSITY SCHOOLS TRUST



GCSE Business (Edexcel)

Business is everywhere and by studying this subject, you will be able to invest in your future.

GCSE Business will enable you to apply your knowledge to contemporary issues and to various types and sizes of businesses. You will gain a solid understanding of the main areas within a business like examining a business's financial position or thinking about the decisions a business can take when they are marketing a new product or finally, analysing how global events can affect businesses.

How will it help me with my future?

As a business student, you will be valued for your ability to think commercially and creatively. The world of work will appreciate your business acumen and your ability to draw on evidence to make informed business decisions and solve business problems.

Many of our previous students at SPW have decided to further their understanding of business and the wider environment by studying **A-level Economics** at Sixth Form. GCSE Business is an excellent platform for those considering entering the world of business management, financial services or law. However, as discussed earlier, the skills and knowledge you gain can be applied to other career pathways. This subject is also perfect for those thinking about starting their own businesses.

COURSE OUTLINE

Unit 1: Investigating Small Business (*written exam – 50%*)

Concentrates on the key business concepts, issues and skills involved in starting and running a small business. It provides a framework for students to explore core concepts through the lens of an entrepreneur setting up a business.

Unit 2: Building a Business (*written exam – 50%*)

Examines how a business develops beyond the start-up phase. It focuses on the key business concepts, issues and decisions used to grow a business, with an emphasis on aspects of marketing, operations, finance and human resources. It also considers the impact of the wider world on the decisions a business makes as it grows.





GCSE Computer Science (OCR)

This course, which is part of the English Baccalaureate, gives students a truly in-depth understanding of how computer technology works and offers an insight into what goes on 'behind the scenes', including computer programming. Studying GCSE Computer Science is a great way to develop critical thinking, analysis and problem-solving skills, which can be transferred to further learning and to everyday life. The course will provide a stepping-stone for students who want to go on to higher study and employment in the field of computer science.



COURSE OUTLINE

Component 01: Computer systems - 80 marks 1 hour 30 mins 50% Calculators not allowed. Introduces students to the central processing unit (CPU), computer memory and storage, data representation, wired and wireless networks, network topologies, system security and system software. It also looks at ethical, legal, cultural and environmental concerns associated with computer science.

Component 02: Computational thinking, algorithms and programming - 80 marks 1 hour 30 mins 50% Calculators not allowed. Students apply knowledge and understanding gained in component 01. They develop skills and understanding in computational thinking: algorithms, programming techniques, producing robust programs, computational logic and translators.

Practical programming: Students are to be given the opportunity to undertake a programming task(s) during their course of study which allows them to develop their skills by designing, writing, testing and refining programs using a high-level programming language. Students will be assessed on these skills during the written examinations, in particular component 02 (section B).



St Paul's Way

Aspiration • Integrity • Community

PART OF UNIVERSITY SCHOOLS TRUST



GCSE Design and Technology

(Eduqas)

This course offers a unique opportunity for you to identify and solve real problems by designing and making products. Through studying Design and Technology, you will be prepared to participate confidently and successfully in an increasingly technological world; and be aware of and learn from the wider influences on design and technology, including historical, social/cultural, environmental and economic factors.

The specification enables you to work creatively when designing and making and applying technical and practical expertise, to:

- Develop realistic design proposals as a result of the exploration of design opportunities and users' needs, wants and values.
- Use imagination, experimentation and combine ideas when designing.
- Develop the skills to critique and refine your ideas whilst designing and making.
- Communicate design ideas and decisions using different media and techniques including sketching, model making and prototyping.
- Develop decision making skills, including the planning and organisation of time and resources when managing your own project work.
- Develop a broad knowledge of materials, components and technologies and practical skills to develop high quality, imaginative and functional prototypes.
- Consider the costs, commercial viability and marketing of products.

This course can lead to a range of level three and University degree courses such as: Product Design, Architecture, and a wide range of engineering disciplines across all industries.

COURSE OUTLINE

Unit 1: Design and Technology in the 21st Century (*Written Exam – 50%*)

Unit 2: Design and Make Task, approximately 35 hours (*non-exam assessment – 50%*)

A sustained design and make task, based on a contextual challenge set by WJEC, assessing candidates' ability to:

- Identify, investigate, and outline design possibilities
- Design and make prototypes
- Analyse and evaluate design decisions and wider issues in design and technology.



GCSE Food Preparation & Nutrition (Eduqas)

During this course you will develop your knowledge and understanding of cooking in a creative, practical environment. You will develop the skills needed to produce high quality dishes with a deep understanding of the scientific principles involved within the process. By studying food preparation and nutrition you will:

- Be able to demonstrate effective and safe cooking skills by planning, preparing and cooking a variety of food commodities whilst using different cooking techniques and equipment
- Develop knowledge and understanding of the functional properties and chemical characteristics of food as well as a sound knowledge of the nutritional content of food and drinks
- Understand the relationship between diet, nutrition and health, including the physiological and psychological effects of poor diet and health
- Understand the economic, environmental, ethical and socio-cultural influences on food availability, production processes, diet and health choices
- Demonstrate knowledge and understanding of functional and nutritional properties, sensory qualities and microbiological food safety considerations when preparing, processing, storing, cooking and serving food
- Understand and explore a range of ingredients and processes from different culinary traditions (traditional British and international) to inspire new ideas or modify existing recipes.

This course can lead to a range of level three and University degree courses such as Food Science, Food and Nutrition, Hospitality and Catering. With potential careers in Food Design and Manufacture, Nutrition, and a wide range of work in hospitality and catering.

COURSE OUTLINE

Unit 1: Principles of Food Preparation and Nutrition (*written exam - 50%*)

Unit 2: Food Preparation and Nutrition in Action (*non-exam assessment - 50%*)

Assessment 1 (8 hours): The Food Investigation Assessment

A scientific food investigation - Looking at your knowledge, skills and understanding in relation to scientific principles of preparing and cooking of food.

Assessment 2 (12 hours): The Food Preparation Assessment

Prepare, cook, and present a menu based on a brief given by the exam board.



St Paul's Way

Aspiration • Integrity • Community

PART OF UNIVERSITY SCHOOLS TRUST



GCSE Art (Edexcel)

In this course you will study drawing, painting, collage, printmaking and various sculpture techniques. You will also learn about artists from other eras and cultures through visiting galleries and museums in London. You will learn to work with a wide variety of media to develop your skills and techniques. This course, therefore, is an excellent base for students wishing to pursue a career in art or design-based industries and can lead to a range of level three and University degree courses. These could include gallery/museum management, architecture, fashion, advertising, animation, games designer, photojournalism, 3-D industry, illustration, printer, studio painter. Much of the work you do in this course will already be familiar to you as it leads on (at a much higher level) from the work you completed in KS3.

COURSE OUTLINE

Component 1: Personal Portfolio (*coursework – 60%*)

This portfolio will contain all your artwork produced during Y10 and 11. You will be expected to research themes, develop personal ideas and make observations related to artists that you have studied. You will explore your own ideas and develop your skills using different media and techniques. Your supporting studies are as important as the finished pieces and so your books should be full! It is essential that your work is always presented to a high standard.



Component 2: Externally Set Assignment (*exam – 40%*)



The assignment consists of a broad-based thematic starting point set by the exam board. The topic will be given to you in early February of Year 11 and you will have eight weeks of preparation time before a final ten-hour exam. Again, your preparatory material, sketches and research are as important as your final piece of work.

GCSE Photography (Edexcel)

In this course you will study the key skills of digital and analogue photography. You will learn how to use a 35mm camera (SLR) to take your own photographs and how to develop them in the darkroom. You will also learn how to use a digital camera (DSLR), including how to take and download digital images and how to manipulate your images using software packages such as Photoshop. During the course you will also learn how to manipulate your photographs using a variety of materials and techniques. You will have the opportunity to work with visiting professional photographers when applicable. You will also visit exhibitions and galleries across London so that you can learn from and be inspired by other photographers'/artists' work. You will be expected to undertake independent research and keep workbooks throughout the duration of the course.

This course, therefore, is an excellent base for students wishing to pursue a career in design-based industries and can lead to a range of level three and University degree courses such as Photography, Animation and Film making. Careers in photography include advertising, commercial work, editorial, fashion, film, food, forensic, industrial, architectural, portraiture and wedding photography, sports and travel etc.

COURSE OUTLINE

Component 1: Personal Portfolio (*coursework - 60%*)

This portfolio will contain all your photography work produced during Y10 and 11. You will be expected to research themes, develop personal ideas and make observations related to photographers/artists that you have studied. You will explore your own ideas and develop your skills using different media and techniques. Your supporting studies are as important as the finished pieces and so your books should be full! It is essential that your work is always presented to a high standard.

Component 2: Externally Set Assignment (*exam - 40%*)

The assignment consists of a broad based thematic starting point set by the exam board. The topic will be given to you in early February of Year 11, and you will have eight weeks of preparation time before a final ten-hour exam. Again, your preparatory material and research are as important as your final piece of work.



St Paul's Way

Aspiration • Integrity • Community

PART OF UNIVERSITY SCHOOLS TRUST



GCSE Textiles (Edexcel)

For this course, you will complete several art & design projects using textiles. You will study methods of decoration and embellishment including batik, screen-printing, embroidery, appliqué and lino printing. In all the projects, you will learn about artists and designers from other times, cultures and the present day. This will influence and develop your skills to produce beautiful pieces of textile work. This course enables you to work with a whole variety of techniques and media and therefore is an excellent basis for students wishing to pursue a career in art or design-based industries. This course can lead to a range of level three and University degree courses. Careers in textiles include fashion, theatre, retail, colour technologist, interiors and garment technologist. Much of the work you do in this course will be familiar to you as it leads on (at a higher level) from the work you completed in KS3. You will be expected to research your work and keep workbooks throughout the duration of the course.

COURSE OUTLINE

Component 1: Personal Portfolio (coursework - 60%)

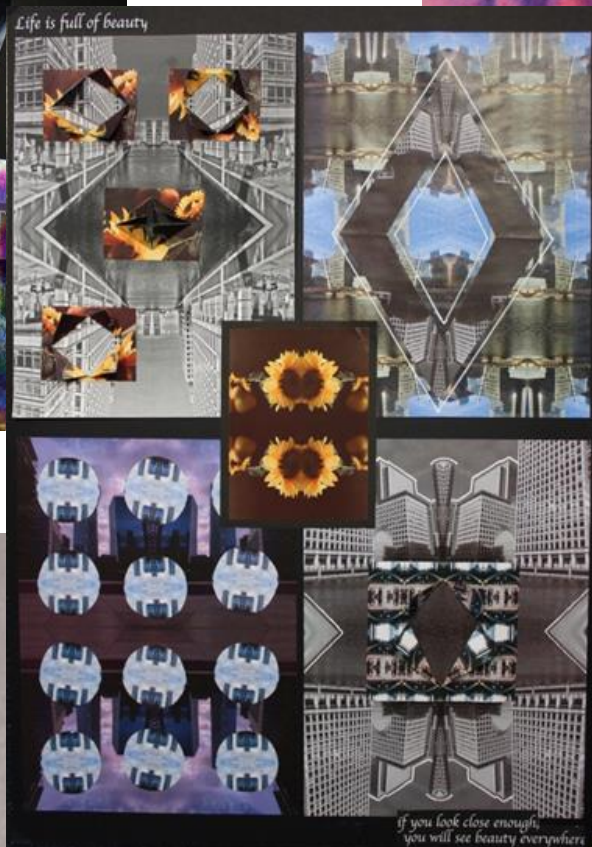
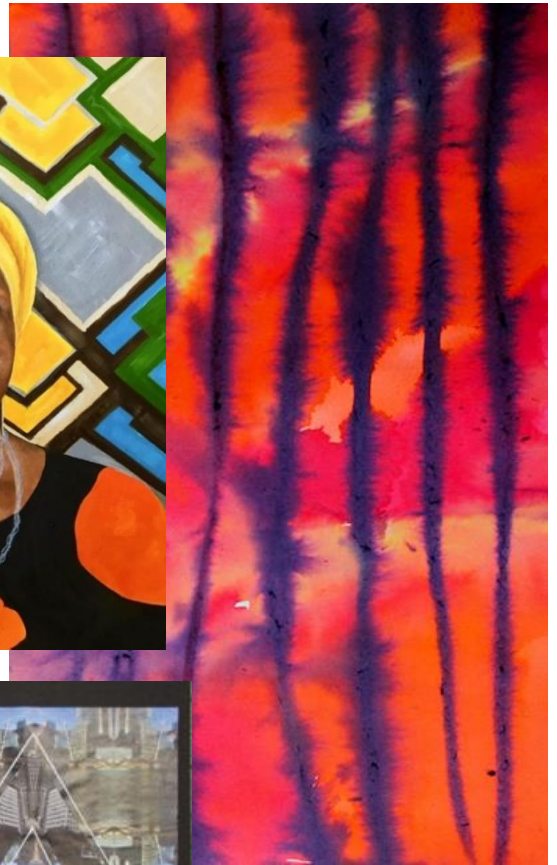
This portfolio will contain all your art/textiles work produced during Year 10 and Year 11. You will be expected to research themes, develop personal ideas and make observations related to artists/designers that you have studied. You will explore your own ideas and develop your skills using different media and techniques. Your supporting studies are as important as the finished pieces and so your books should be full! It is essential that your work is always presented to a high standard.

Component 2: Externally Set Assignment (exam - 40%)

The assignment consists of a broad based thematic starting point set by the exam board. The topic will be given to you in early February of Year 11, and you will have eight weeks of preparation time before a final ten-hour exam. Again, your prep material and research are as important as your final piece of work.



Examples of GCSE ART: Visual Arts, Photography and Textiles work produced by St Paul's Way Trust School students.



Participation

In addition to your academic courses, you will also have the opportunity to participate in a range of other activities. These will complement your GCSE courses, offering you new experiences and teaching you a variety of skills. These activities will help you to write distinctive and detailed applications for future study and employment. Everyone will have GCSEs, but what additional experiences can you write about that will help you to stand out from the crowd? There are many opportunities for you to get involved, for example, in music, drama, sports and debating. In addition to these we offer three particular programmes for which you may wish to sign up.

Business Links

At St Paul's Way School, we aspire that all our graduates progress into a career that is tailored to their personal ambitions, and which allows them to realise their full potential. As part of SPW's robust careers programme, and in line with Gatsby Benchmark 6, all students will take part in work experience during Year 10. Our students have previously gained placements at: Morgan Stanley, NHS, Queen Mary University of London and Bank of America. There are further opportunities for students in smaller groups to take part in workshops, programmes and visits throughout the year relating to their subjects and interests.

Key Dates

Wednesday 24th January 2024

Year 9 Pathways Event
Pathways Online Form opens.

The online form is available via email or the Year 9 Teams Classroom, or via the QR code below. You will need to be signed in to your Microsoft account to complete this form.



Friday 2nd February 2024

Deadline for students to complete Pathways Online Form.

Monday 26th February 2024

School will share the final allocated subjects with students and parents.

Pathways Appeals Process

Please note that there will be an opportunity for parents to appeal following the allocation process using an online form.

This form will be available on the website from Tuesday 27th February 2024 to Friday 1st March 2024. <https://www.spwt.net/secondary/year9-pathways>



Year 9 Pathways Form

EXAMPLE ONLY - ALL FORMS MUST BE SUMMITTED ONLINE

Year 9 Pathways 2024 Form

Deadline: Friday 2nd February 2024

At SPW it's compulsory for all students to study:

- English Literature and Language
- Maths
- Science (Combined or Triple)
- RE (exam sat at the end of Year 10)

This form is designed for you to choose your three option subjects along with two additional options if your first choice subjects are unavailable.

NOTE: You cannot select both Computer Science and ICT. You cannot select both Sport BTEC and PE GCSE.

EBacc Pathway

You will need to pick either Geography or History as your first choice and a language as your second choice. You will also pick a third choice and two back up options as your fourth and fifth choice.

Triple Science Pathway

You will need to pick Triple Science as your first choice and then Geography or History as your second choice and a language as your third choice. You will also need two back up options as your fourth and fifth choice.

Blended Pathway

You can pick any three subjects for your first, second and third choice. You will also need two back up options as your fourth and fifth choice.

1. Student Full Name *

Enter your answer

2. Tutor Group *

Select your answer





Year 9 Pathways Form

EXAMPLE ONLY - ALL FORMS MUST BE SUMMITTED ONLINE

3. First Choice *	4. Second Choice *	5. Third Choice *	6. Fourth Choice * (Back Up)	7. Fifth Choice * (Back Up)
<input type="radio"/> Art	<input type="radio"/> Art	<input type="radio"/> Art	<input type="radio"/> Art	<input type="radio"/> Art
<input type="radio"/> Business Studies	<input type="radio"/> Business Studies	<input type="radio"/> Business Studies	<input type="radio"/> Business Studies	<input type="radio"/> Business Studies
<input type="radio"/> Citizenship	<input type="radio"/> Citizenship	<input type="radio"/> Citizenship	<input type="radio"/> Citizenship	<input type="radio"/> Citizenship
<input type="radio"/> Computer Science (GCSE)	<input type="radio"/> Computer Science (GCSE)	<input type="radio"/> Computer Science (GCSE)	<input type="radio"/> Computer Science (GCSE)	<input type="radio"/> Computer Science (GCSE)
<input type="radio"/> Design Technology	<input type="radio"/> Design Technology	<input type="radio"/> Design Technology	<input type="radio"/> Design Technology	<input type="radio"/> Design Technology
<input type="radio"/> Drama	<input type="radio"/> Drama	<input type="radio"/> Drama	<input type="radio"/> Drama	<input type="radio"/> Drama
<input type="radio"/> Food & Nutrition	<input type="radio"/> Food & Nutrition	<input type="radio"/> Food & Nutrition	<input type="radio"/> Food & Nutrition	<input type="radio"/> Food & Nutrition
<input type="radio"/> French	<input type="radio"/> French	<input type="radio"/> French	<input type="radio"/> French	<input type="radio"/> French
<input type="radio"/> Geography	<input type="radio"/> Geography	<input type="radio"/> Geography	<input type="radio"/> Geography	<input type="radio"/> Geography
<input type="radio"/> History	<input type="radio"/> History	<input type="radio"/> History	<input type="radio"/> History	<input type="radio"/> History
<input type="radio"/> ICT (iMedia - BTEC)	<input type="radio"/> ICT (iMedia - BTEC)	<input type="radio"/> ICT (iMedia - BTEC)	<input type="radio"/> ICT (iMedia - BTEC)	<input type="radio"/> ICT (iMedia - BTEC)
<input type="radio"/> Latin	<input type="radio"/> Latin	<input type="radio"/> Latin	<input type="radio"/> Latin	<input type="radio"/> Latin
<input type="radio"/> Music	<input type="radio"/> Music	<input type="radio"/> Music	<input type="radio"/> Music	<input type="radio"/> Music
<input type="radio"/> Spanish	<input type="radio"/> Spanish	<input type="radio"/> Spanish	<input type="radio"/> Spanish	<input type="radio"/> Spanish
<input type="radio"/> P.E (GCSE)	<input type="radio"/> P.E (GCSE)	<input type="radio"/> P.E (GCSE)	<input type="radio"/> P.E (GCSE)	<input type="radio"/> P.E (GCSE)
<input type="radio"/> Photography	<input type="radio"/> Photography	<input type="radio"/> Photography	<input type="radio"/> Photography	<input type="radio"/> Photography
<input type="radio"/> Sport (BTEC)	<input type="radio"/> Sport (BTEC)	<input type="radio"/> Sport (BTEC)	<input type="radio"/> Sport (BTEC)	<input type="radio"/> Sport (BTEC)
<input type="radio"/> Textiles	<input type="radio"/> Textiles	<input type="radio"/> Textiles	<input type="radio"/> Textiles	<input type="radio"/> Textiles
<input type="radio"/> Triple Science	<input type="radio"/> Triple Science	<input type="radio"/> Triple Science	<input type="radio"/> Triple Science	<input type="radio"/> Triple Science



St Paul's Way

Aspiration • Integrity • Community

PART OF UNIVERSITY SCHOOLS TRUST